

Certificate Of Analysis



Client:

Eurochem-labs.com
+3197010281754
sales@eurochem-labs.com

Laboratory:

Liquilabs s.r.o.
Ohradní 24B
14000 Michle
Czechia
www.liquilabs.cz

Sample Identification

Sample Name DSIP 10 mg **Batch Number** 2074264 **Date Published** 2025-08-15 16:17

Results for Lyo-0053

Analysis of Peptide Identity, Content and Purity	Result	Unit	Uncertainty	Reporting Limit
DSIP Assay Peptide Screening	10.16	mg	[± 0.05]	
DSIP Identification by RT Peptide Screening	0.992		[± 0.005]	
DSIP Identification by spectrum Peptide Screening	990		[± 20]	
DSIP Purity Peptide Screening	99.33	%	[± 0.44]	


Bioburden	Result	Unit	Uncertainty	Reporting Limit
Total Aerobic Microbial Count USP <61> Plate Count Method	Not detected	CFU/g		>= 1000 △
Total Yeast and Mold Count USP <61> Plate Count Method	Not detected	CFU/g		>= 100 △

Endotoxin Analysis	Result	Unit	Uncertainty	Reporting Limit
Bacterial Endotoxin USP<85> Bacterial Endotoxin Chromgenic Test	< 0.001	EU/mg		> 0.5 △

Heavy Metals	Result	Unit	Uncertainty	Reporting Limit
Arsenic Elemental Impurities Screening	Not detected	ppm		>= 1.5 △
Cadmium Elemental Impurities Screening	Not detected	ppm		>= 0.5 △
Cobalt Elemental Impurities Screening	Not detected	ppm		>= 25 △
Lead Elemental Impurities Screening	Not detected	ppm		>= 1.5 △

Heavy Metals	Result	Unit	Uncertainty	Reporting Limit	
Nickel Elemental Impurities Screening	Not detected	<i>ppm</i>		>= 25	△
Quicksilver Elemental Impurities Screening	Not detected	<i>ppm</i>		>= 1.5	△
Vanadium Elemental Impurities Screening	Not detected	<i>ppm</i>		>= 25	△

Attachments for Lyo-0053

	Method Specification	
Determination of identity, content and purity of DSIP		
<i>Document number</i> DSIP_001_2025	<i>Superseded document</i> -	<i>Number of pages</i> 2

1. Content and Purity Assessment

1.1. Instrumentation

Module	Name	Serial Number
System Controller	Shimadzu SCL-10ADvp	C21014112659
Degassing Unit	Shimadzu DGU-14A	NA
LPGE valve	Shimadzu FCV-10Avp	NA
Pump	Shimadzu LC-10ADvp	C20964130094
Autosampler	Shimadzu SIL-10ADvp	C21054109114
Column Thermostat	Shimadzu CTO-10ACvp	C21033770144
Detector	Shimadzu SPD-10ADvp	C20994233588

1.2. Chromatographic conditions

Chromatographic conditions	
Eluent A	1% TFA in Water (HPLC, Gradient Grade)
Eluent B	1% TFA in Acetonitrile (HPLC, Gradient Grade)
Flow rate	1mL/min
Program	Gradient elution
Injection volume	2 µL
Column Temperature	35°C
Column	Avantor ACE UltraCore C18, 150x3,0 mm, 3,5µm
Detection wavelength	280nm

Gradient Program		
Time [min]	A [%]	B [%]
2	99	1
25	5	95
28	5	95
28.01	99	1
32	end	

1

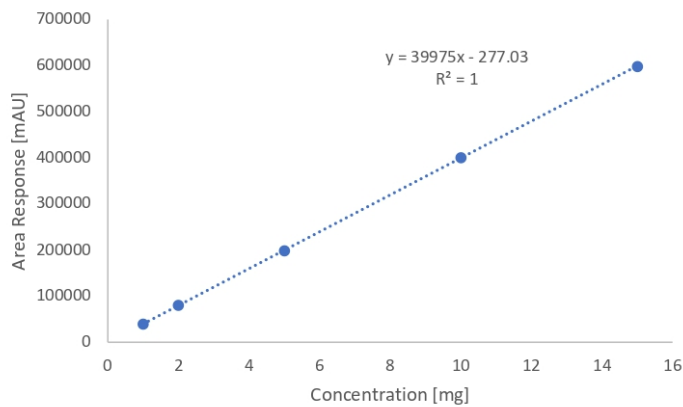
Attachment for Lyo-0053
Filename: DSIP_page-0001.jpg

1.3. Sample preparation

Whole amount of container was dissolved in 2mL of water (HPLC, Gradient Grade). Aliquote part of 1 mL was dispensed into HPLC vial for analysis.

1.4. Calibration curve

Calibration curve detail	
Quantitative method	External Standard
Calibration Type	Linear
Number of calibration points	5
Force through Zero	Disabled
Weighting Method	None



2. Purity assessment

1.5. Calculation of purity of peptide

Purity of DSIP in sample was determined by area normalization method as ratio of DSIP peak and sum of all peaks detected at wavelength 280 nm.

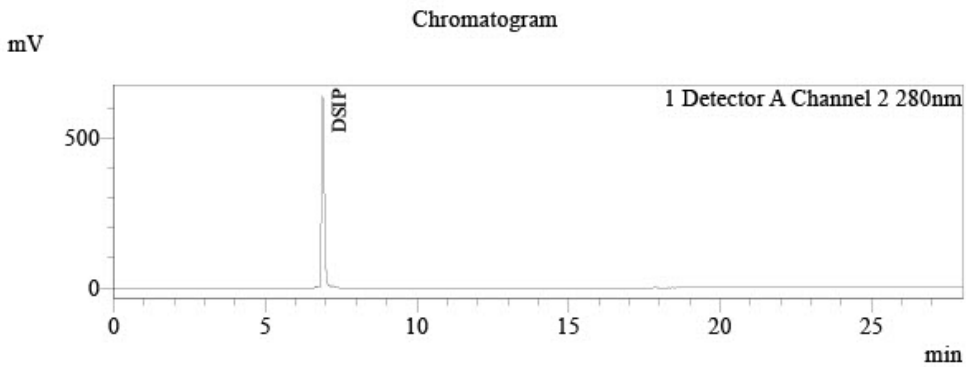
$$Purity(\%) = \frac{Peak\ Area_{DSIP}}{\sum Peak\ Area_i}$$

Analysis Report



Injection Volume : 2
Data File : LYO-0053-P01_2_001_004.lcd
Method File : Peptide screening.lcm
Date Acquired : 30.06.2025 23:02:37

Sample Information




Peak Table

Detector A Channel 2 280nm

Peak#	Name	Ret. Time	Conc.	Unit	Area%
1		6,667	0,000		0,663
2	DSIP	6,888	10,160	mg	99,337
Total			10,160		100,000

Attachment for Lyo-0053
Filename: DSIP.jpg

	Method Specification	
	Determination of bacterial endotoxin content of lyophilized samples	
<i>Document number</i> ENDOTOX_001_2025	<i>Superseded document</i> -	<i>Number of pages</i> 2

1. Chromgenic LAL Assay Determination of Bacterial Endotoxin content of sample

1.1. Instrumentation

- Pipette set 1-1000 µL
- Thermostatically controlled water bath
- UV VIS spectrometer (Shimadzu UV-1601)
- GenScript ToxinSensor Chromgenic LAL Endotoxin Assay kit

1.2. Chemicals

- LAL Reagent water (endotoxin free)
- Limulus Amoebocyte Lysate
- LAL Substrate
- Color Stabilizer #1
- Color Stabilizer #2
- Color Stabilizer #3
- 35% HCl (p.a.)

1.3. Sample preparation

1. Sample container was weighed prior to dissolution and measured weight was marked.
2. Sample was completely dissolved in its container by 2 mL of LAL Reagent water.
3. 100 µL of the sample was aliquoted for analysis.
4. After analysis container was emptied and dried.
5. Dry mass of container was measured and exact weight of dissolved content was determined as:

$$m_{dc} = m_{sample} - m_{container}$$

1.4. Toxin sensor Chromgenic LAL Endotoxin Assay kit preparation

Procedures regarding preparation of reaction solutions possible to find in:

https://www.genscript.com/site2/document/5292_20080806231827.PDF

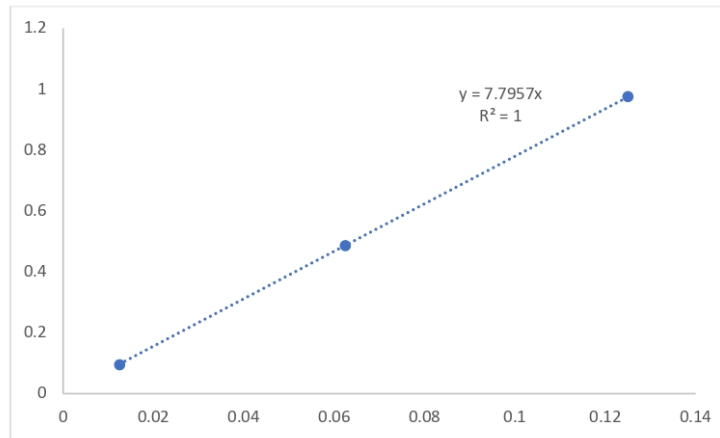
1

Attachment for Lyo-0053
Filename: 2025_page-0001.jpg

1.5. Measurement procedure

	Standards	Samples	Blank
Standards (mL)	0.1	-	-
Samples (mL)	-	0.1	-
LAL Reagent Water (mL)	-	-	0.1
LAL Solution (mL)	0.1	0.1	0.1
Mix well and incubate at 37°C for 27 min			
Substrate solution (mL)	0.1	0.1	0.1
Mix well and incubate at 37°C for 6 min			
Color Stabilizer #1 solution	0.5	0.5	0.5
Color Stabilizer #2 solution	0.5	0.5	0.5
Color Stabilizer #3 solution	0.5	0.5	0.5
Mix well and read the absorbance at 545nm			

1.6. Calibration curve



1.7. Calculation of endotoxin content

Endotoxin content of the sample was calculated from the calibration curve as:


$$Endotox[EU/mg] = \frac{\left(\frac{ABS_{sample}}{S_{calib}}\right) * 20}{m_{sample}}$$

ABS_{sample} = Measured absorbance of sample

S_{calib} = Slope of calibration curve

m_{sample} = real measured mass of sample

20 = dilution factor of measured sample

	Method Specification	
Determination of bioburden of lyophilized samples		
<i>Document number</i> MIC_001_2025	<i>Superseded document</i> -	<i>Number of pages</i> 2

1. Instrumentation and chemicals

1.1. Instruments used

- Sterile Syringe 2mL Luer
- Sterile needles
- Ready made PCA Plate ROTI Aquatest
- Ready made Sab4 Plate ROTI Aquatest

1.2. Chemicals

Sterile physiological solution (0.9% NaCl)

2. Sample preparation and inoculation

2.1 Sample preparation

1. Fresh sterile needle and syringe was used for measuring exactly 2 mL of sterile physiological solution.
2. Needle was changed and by new needle rubber top of peptide container was penetrated and 2 mL of sterile physiological solution was dispensed.
3. Content of container was completely dissolved and left for 5 minutes to settle potentially created bubbles.
4. This procedure is repeated for two vials.

2.2 Total Aerobic microbial count inoculation and cultivation

1. By sterile needle 1 mL of solution was filled into the sterile syringe.
2. Needle was placed above the flame for few seconds to sterilize.
3. Consequently 1 mL of solution was poured into the ready to use sterile petri dish filled with PCA agar and petri dish was closed.
4. Process was repeated for two petri dishes.
5. With sterile needle, 1 mL of sterile physiological solution was filled into the sterile needle and was inoculated onto one sterile petri dish filled with PCA agar as negative control sample.
6. Samples and negative control sample were placed in incubator at temperature 37°C for 120h.

1

Attachment for Lyo-0053
Filename: Bioburden-images-0.jpg

2.3 Total Yeast and Mold count inoculation and cultivation

1. By sterile needle 1 mL of solution was filled into the sterile syringe.
2. Needle was placed above the flame for few seconds to sterilize.
3. Consequently 1 mL of solution was poured into the ready to use sterile petri dish filled with Sab4 agar and petri dish was closed.
4. Proces was repeated for two petri dishes.
5. With sterile needle, 1 mL of sterile physiological solution was filled into the sterile needle and was inoculated onto one sterile petri dish filled with Sab4 agar as negative control sample.
6. Samples and negative control sample were placed in incubator at temperature 25°C for 72h.

3. Evaluation of results

After incubation time, colonies are counted as cfu (colonies forming units) and result per 1g of sample is determined as:

$$CFU_{avg} = \frac{\sum CFU_n}{n}$$

CFU_{avg} = average CFU counted from n inoculations

CFU_n = CFU counted per inoculation

n = number of inoculations

$$CFU \text{ per gram} = \frac{CFU_{avg}}{m_s} * DF$$

CFU_{avg} = Average CFU counted from n inoculations

m_s = mass of sample (mg)

DF = Dilution factor

If negative control sample is evaluated as positive, process have to be repeated due to possible contamination in the process of inoculation or incubation.

2

Attachment for Lyo-0053

Filename: Bioburden-images-1.jpg

Responsibles



Mr. Ján Galbavý
Founder/Manager

Analysis results relate only to the samples tested.

This document shall not be reproduced except in full, without the written approval of Liquilabs s.r.o.